

Coaxial Frequency Mixer

ZMX-7GHR

Level 17 (LO Power +17 dBm) 3700 to 7000 MHz

Maximum Ratings

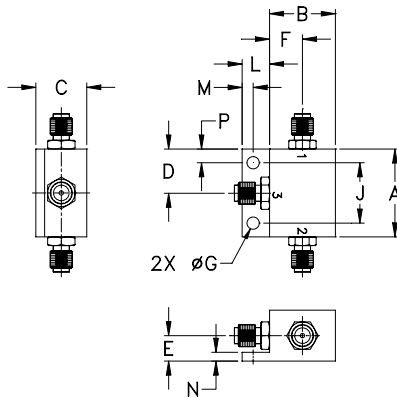
Operating Temperature	-55°C to 100°C
Storage Temperature	-55°C to 100°C
RF Power	200mW
IF Current	40mA

Permanent damage may occur if any of these limits are exceeded.

Coaxial Connections

LO	2
RF	1
IF	3

Outline Drawing



Outline Dimensions (inch/mm)

A	B	C	D	E	F	G	H
1.00	.75	.58	.50	.29	.38	.140	--
25.40	19.05	14.73	12.70	7.37	9.65	3.56	--

J	K	L	M	N	P	wt
.687	--	.32	.13	.10	.16	grams
17.45	--	8.13	3.30	2.54	4.06	25.0

Features

- wide frequency range, 3700 to 7000 MHz
- low conversion loss, 5.3 dB typ.
- good L-R isolation, 33 dB typ., L-I, 34 dB typ.

Applications

- SATCOM
- instrumentation
- defense & federal communications
- SHF



CASE STYLE: BU413

Connectors	Model
SMA	ZMX-7GHR

Electrical Specifications

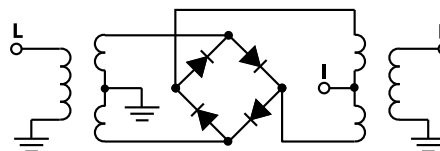
FREQUENCY (MHz)	CONVERSION LOSS (dB)	LO-RF ISOLATION (dB)		LO-IF ISOLATION (dB)	
		Typ.	Min.	Typ.	Min.
3700-7000	DC-1000	5.3	0.30	8.5	

1 dB COMP.: +14 dBm typ.

Typical Performance Data

Frequency (MHz)	Conversion Loss (dB)	Isolation L-R (dB)	Isolation L-I (dB)	VSWR RF Port (:1)	VSWR LO Port (:1)
3700.00	3730.00	3.95	31.94	27.92	1.61
3886.79	3916.79	4.04	29.49	29.05	1.40
4000.00	4030.00	4.07	31.32	29.24	1.88
4260.38	4290.38	4.38	38.08	31.10	2.99
4509.43	4539.43	4.80	35.04	30.94	3.21
4696.23	4726.23	5.21	31.75	31.14	2.95
4883.02	4913.02	5.30	31.22	31.93	2.73
5000.00	4970.00	5.23	32.26	32.82	2.78
5194.34	5164.34	5.41	32.90	34.00	3.05
5381.13	5351.13	5.55	31.71	34.53	3.31
5567.92	5537.92	5.73	30.38	34.46	3.64
5754.72	5724.72	5.70	31.17	34.72	4.13
6000.00	5970.00	6.11	30.09	34.77	5.23
6252.83	6222.83	6.58	29.87	34.26	5.86
6315.09	6285.09	6.91	30.08	34.24	6.08
6501.89	6471.89	6.95	30.95	33.65	6.11
6626.42	6596.42	6.82	30.68	32.90	6.05
6750.94	6720.94	6.68	29.96	32.03	6.20
6875.47	6845.47	6.55	29.25	31.16	6.04
7000.00	6970.00	6.40	28.57	30.32	5.81

Electrical Schematic



For detailed performance specs & shopping online see web site

P.O. Box 350166, Brooklyn, New York 11235-0003 (718) 934-4500 Fax (718) 332-4661 The Design Engineers Search Engine www.minicircuits.com Provides ACTUAL Data Instantly at minicircuits.com

IF/RF MICROWAVE COMPONENTS

Notes: 1. Performance and quality attributes and conditions not expressly stated in this specification sheet are intended to be excluded and do not form a part of this specification sheet. 2. Electrical specifications and performance data contained herein are based on Mini-Circuit's applicable established test performance criteria and measurement instructions. 3. The parts covered by this specification sheet are subject to Mini-Circuit's standard limited warranty and terms and conditions (collectively, "Standard Terms"); Purchasers of this part are entitled to the rights and benefits contained therein. For a full statement of the Standard Terms and the exclusive rights and remedies thereunder, please visit Mini-Circuit's website at www.minicircuits.com/MCLStore/terms.jsp.

REV. A
M151107
ZMX-7GHR
DJ/TD/CP/AM
151009
Page 1 of 2

